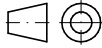


**TABELLA PRESTAZIONI CONSUMI**  
con temperatura in ingresso 20° C

Pressione (Bar)	Temp. Uscita Fraz. fredda (°C)	Consumo aria (NI/min)	----- Potenza di raffreddamento (W - Kcal/h - BTU/h)
1	-2	128	
2	-12	212	
3	-18	296	
4	-23	376	
5	-26	460	
6	-28	540	
7	-31	616	528 W - 440 kcal/h - 1760 BTU/h



simianproject.com

SCHEDA TECNICA PRODOTTO		DATA/DATE	
RAFFREDDATORE VR-400 CON GANASCE		12/01/2018	
		AUTORE/AUTHOR L.Lombardi	SCALA/SCALE 1:1
		PESO/WEIGHT 0.468 kg	
		CODICE/CODE 90VR400-G	REV. 00

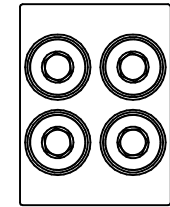
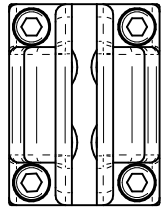
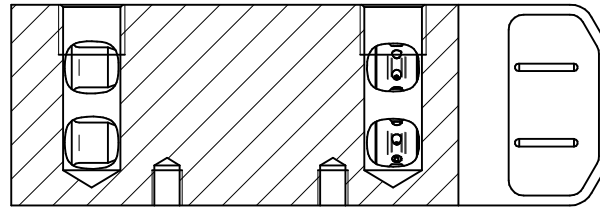
CONFIDENTIAL - NOT TO BE DISCLOSED

1 2 3 4 5 6

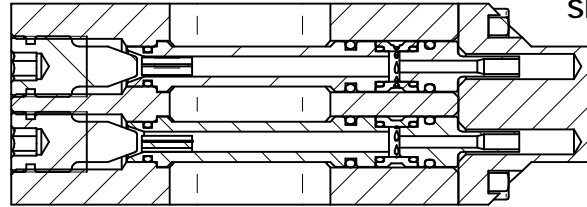
A

A

SEZIONE E-E



SEZIONE D-D

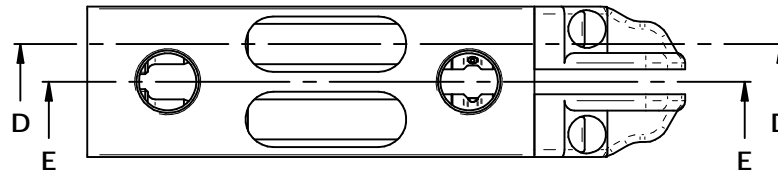
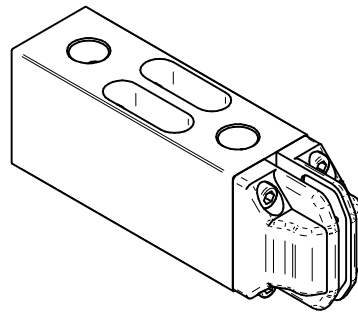


B

B

C

C



D

D

SEZIONE F-F

<D>	-	00/00/00		
Indice	RdM	Data appr.	Appr. da	Descrizione

E

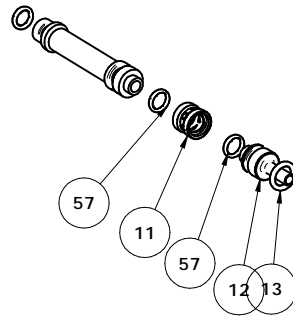
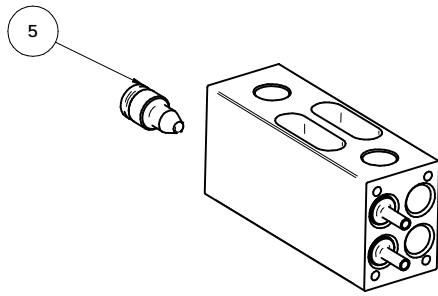
E



simianproject.com

SCHEDA TECNICA PRODOTTO		DATA/DATE	12/01/2018
RAFFREDDATORE VR-400 CON GANASCE		AUTORE/AUTHOR	L.Lombardi
PESO/WEIGHT	0,468 kg	SCALA/SCALE	1:1
CODICE/CODE	90VR400-G	REV.	00

1 2 3 4 5 6



Pos	Codice	Descrizione	Q.tà
1*	VR402	CORPO	1
5	VRX108	VITE DI REGOLAZIONE	4
8*	601020	OR di=5 C=1.5 VITON	4
9*	VR401	TUBO INTERNO	4
11	VR02	INIETTORE	4
12	VR03	OTTURATORE USCITA FREDDA	4
13	601002	OR di=6.5 C=2	8
14*	VR12-B	RADDRIZZATORE DI FLUSSO	4
16*	VR403	GANASCA DX/SX	2
56*	502015	TCEI M4x12	4
57	601001	OR di=4.5 C=1.5	8



simianproject.com

SCHEDA TECNICA PRODOTTO		DATA/DATE	12/01/2018
RAFFREDDATORE VR-400 CON GANASCE		AUTORE/AUTHOR	L.Lombardi
		PESO/WEIGHT	0.468 kg
CODICE/CODE		90VR400-G	SCALA/SCALE
		REV.	1.2
			00